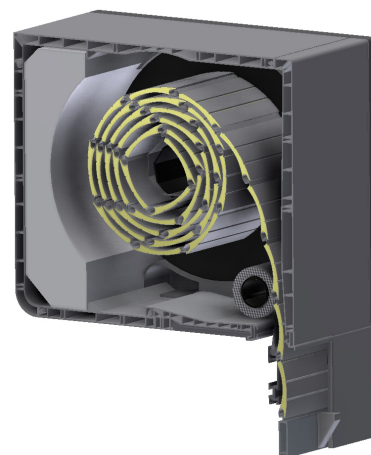
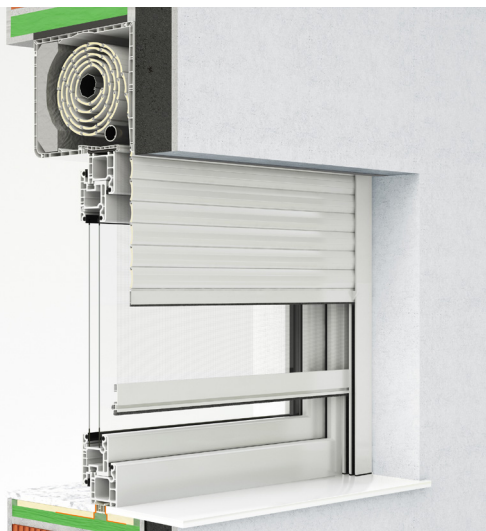


Built-in roller shutter MULTI-ROLLBOX



- **HEAT PROTECTION**
- **ANTI-THEFT PROTECTION**
- **LIGHT REGULATION**
- **DIMMING**
- **UV PROTECTION**
- **HEATING / COOLING SAVINGS**

The first type of built-in roller shutters is the shutter with a PVC built-in box, MULTI-ROLLBOX with dimensions 200x230 mm. It is distinguished by particularly attractive curved design, optionally mounted insect screen, excellent insulation, stronger construction, and a simple economical installation, where the box can be mounted to remain visible or installed under facade. Suitable for installation on all types of windows.

SLATS | Color palette:

WARNING: Certain colours on the chart may vary from original!

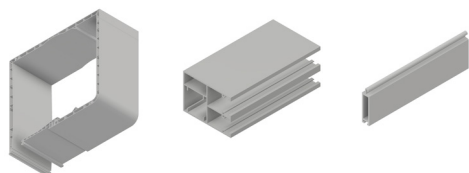
	PC1	01 WHITE	02 D. CHOCO	03 SILVER	05 L. CHOCO	PC2	04 BEIGE	08 GREEN	10 L. GREY	11 ANTRACITO GRISO	13 GRAPHITE	PC3	06 ASH	07 WALNUT	16 GOLDEN OAK
		12 ANTHRACITE	14 RAL 9007	52 DB 703		15 OCHRE	18 RAL 8017						17 WALNUT GEA	21 RAL 3011	

	PC1	01 WHITE	02 D. CHOCO	03 SILVER	04 BEIGE		PC1	01 WHITE	03 SILVER
		11 ANTRACITO GRISO	12 ANTHRACITE	14 GREY	52 DB 703			12 ANTHRACITE	52 DB 703

* colors 02, 04, 11, 14 available for orders over 50m²

ALU slats are filled with insulation - polyurethane foam, standard fitted with anti-theft springs. Machine slat binding ensures a quieter and more reliable operation.

CABINET, GUIDERAILS, END SLAT | Color palette:



PC1	013 WHITE	010 RAL 9006	090 RAL 9007	PC2	013 WHITE
	042 RAL 7015	066 RAL 8012	052 DB 703		013 WHITE

WARNING: Certain colours on the chart may vary from original!



MANIPULATION:

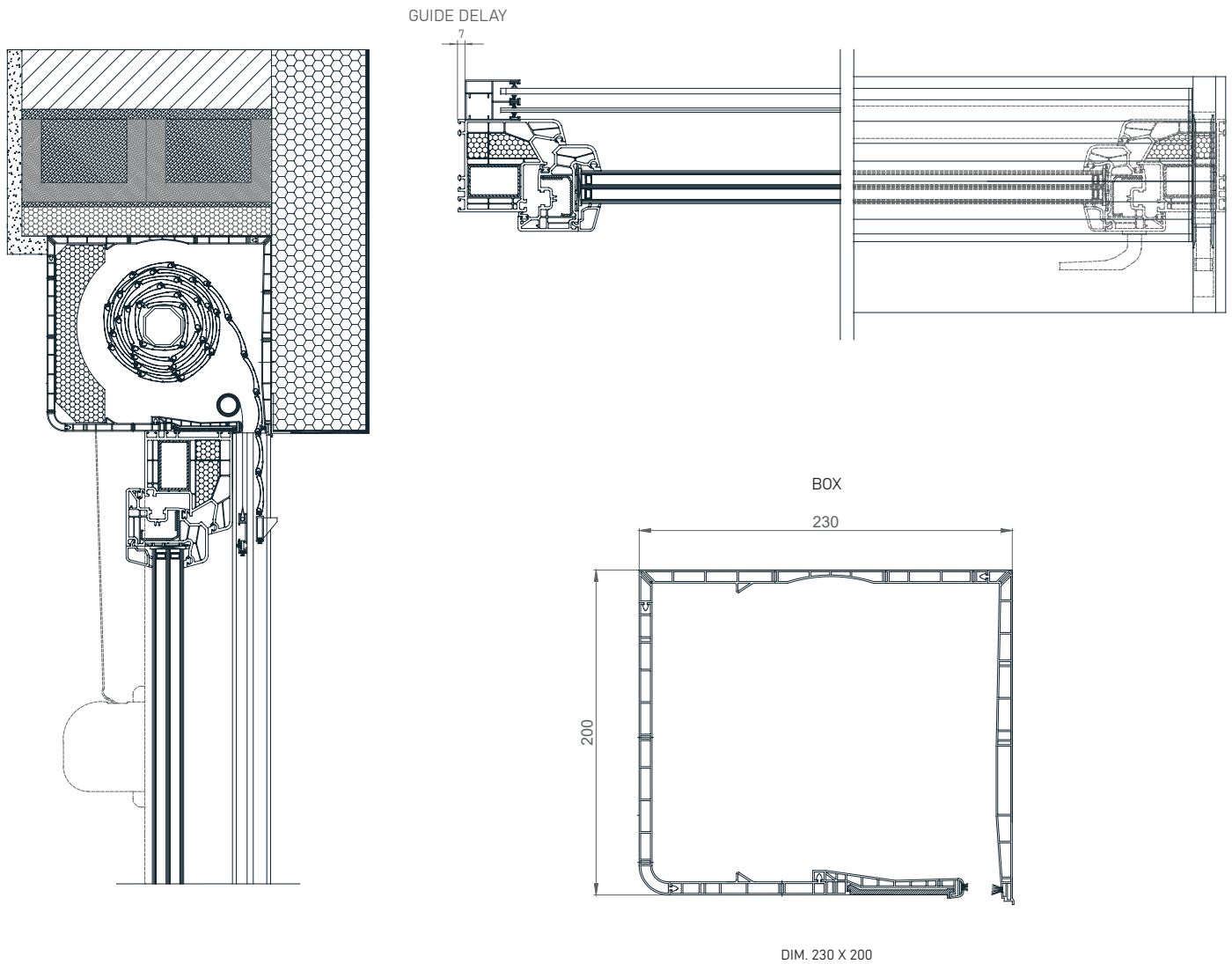


Manipulation is possible with automaton or electrical motor. For motor operation there is the standard PLUG & PLAY function, which allows the connection of several motors to a single switch, self-adjusting positions and the safety function in the event of an obstacle.

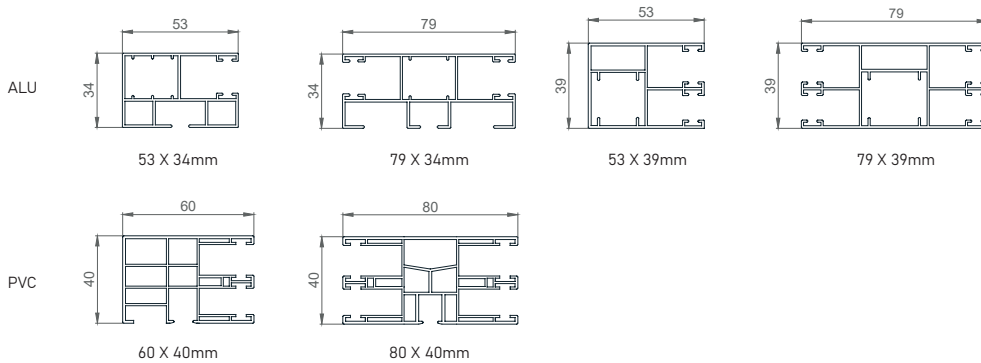
Built-in roller shutter MULTI-ROLLBOX



TEHNICAL DRAWINGS | Shade details:



GUIDERAILS



SLATS

